



ELECTRIC-HYDRAULIC OPERATING TABLE

Electric-Hydraulic Operating Table

CURAR 5

We Provide Customized Overall Solutions
for Medical Equipment

PRODUCT SPECIFICATIONS

External Size (LxWxH)	2140x550x(550-1050) mm
Reverse Trendelenburg	0-30°
Trendelenburg	0-30°
Lateral tilt left/right	0-20°
Head plate up/down	60°/90°
Back plate up/down	85°/50°
Leg plate up/down	15°/90°

Leg plate outwards	90°
Horizontal sliding	0-300 mm

Anesthesia screen frame
Shoulder support
Arm holder
Body support
Leg support
Foot plate
Long sliders
Slide blocks

1pc
2pcs
2pcs
2pcs
2pcs
2pcs
2pcs
6pcs

Design

This electric hydraulic operating table is suitable for thoracic and abdominal surgery, brain surgery, ENT surgery, obstetrics and gynecology, urology, orthopedics and other surgical operations. The material is 304 stainless steel, and the platform is made of high-strength synthetic plate which is translucent for X-ray. It can also shift the table back and forth up to 300mm for C-arm examination of all parts of the patient's body during the operation without moving the patient.

Welding | Craftsmanship

Adopted robot integral welding, smooth appearance, stable and reliable.

Safety features

The table is equipped with a self-protection against collision system to ensure that the table can be operated safely in any position.



Material

The whole machine is made of 304 stainless steel material, features beautiful, strong, impact resistant, damage resistant, corrosion resistant and more lightweight. And with strong bearing capacity of 360kg.



Base

Base is made of Q235 board, with 304 stainless steel cover which is anti-corrosion and easy to clean.



Surface

Five-section modular table design, the head plate, upper back plate, and leg plate can be disassembled manually. it can meet different surgical needs by increasing or reducing the table modules.



Mattress

Memory sponge mattress (polyurethane memory foam), thickness 75mm, seamless mattress surface, waterproof, air permeable, easy to clean, anti-static, and can be see-through.



Head plate

The head plate is a double-jointed head plate that allows the patient to obtain a comfortable head position during the surgery.



Back plate

Divided into upper backplate and lower backplate, the upper backplate can be disassembled by manually, easy to install.



Leg plate

The leg plate is a double-joint horizontal rotating leg plate, so there's better operating space for surgeon.



Drive mode

Adopted electro-hydraulic control mode, flexibly control all table movements through the micro-key switch controller, and electrically adjust 7 main action groups including bed lifting, reversed trendelenburg and trendelenburg, left and right tilt, backplate lifting, leg plate lifting, countertop translation, and brake.



Hydraulic control system

Five-section modular table design, the head plate, upper back plate, and leg plate can be disassembled manually. it can meet different surgical needs by increasing or reducing the table modules.



Modular tabletop

The head plate and leg plate can be interchanged according to the operation requirements, and the hook type one-key quick disassembly structure is adopted. The system can automatically identify the direction of the head and leg plate after interchange.



Horizontal sliding

The table has a translation function which is driven by an independent motor, and the translation distance is $\geq 300\text{mm}$.



One button reset

The one-button reset button can complete the horizontal, forward and reverse flexion functions with just one key.



Controller

Functions controlled by wired hand controller or column control panel. Each control mode is independent, and the dual-mode operation design provides double security for the operation.



Buckling & reverse buckling

With functions of one-key buckling $\geq 220^\circ$ and one-key reverse buckling $\leq 100^\circ$.



Emergency stop button

The emergency stop button is added to further improve the safety of operating bed.



Accessories quick disconnect device

Accessories adopt a structure of quick-disassemble device, flexible and convenient.



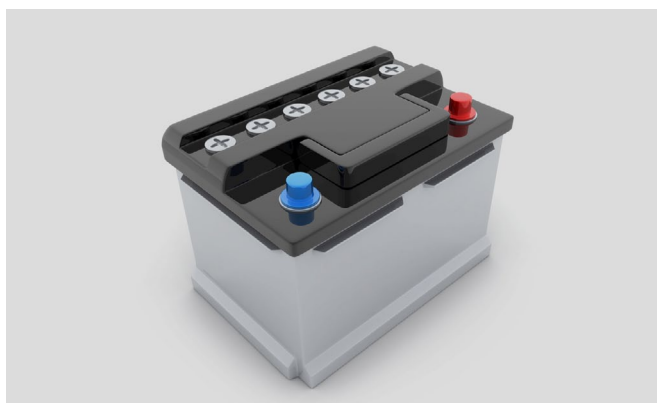
Caster

Using industrial casters, moving quiet, smooth and convenient. Diameter 75mm. Four casters are all universal wheels.



Battery

Equipped with high-performance rechargeable batteries, it can meet the needs of ≥ 50 surgeries, ensuring that the operating bed can work without AC power supply, ensuring maximum safety and reliability. Rechargeable batteries require no maintenance and can be used for a long time.



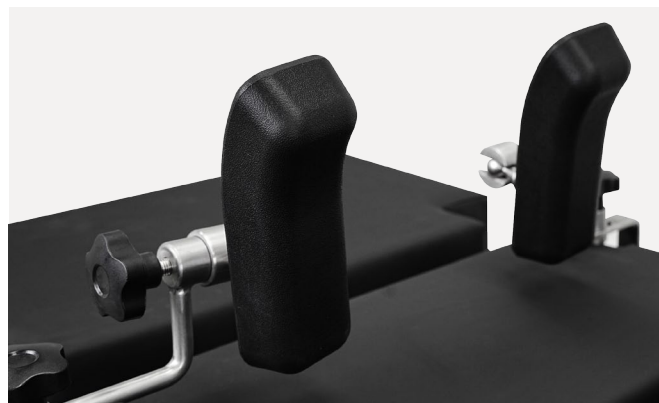
Anesthesia Screen Frame

Equipped with a stainless steel anesthesia screen frame for hanging anesthesia curtains, used to shield and cover the patient's head during use.



Shoulder support

Polyurethane support frame, adjustable in angle, used to stabilize the patient's body.



Body supporter

Polyurethane supportframe, adjustable in angle, used to stabilize the patient's body.



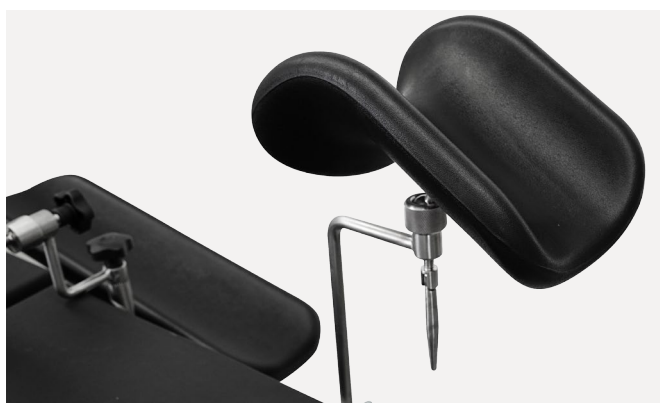
Arm rest

Polyurethane widened armrest board with attached straps, providing stable performance and versatile applications.



Leg rest

Manual multi-angle adjustment for easy use.



Foot plate

Be used to support patient's feet.



POSTURE FUNCTION

Lowest position of table top

550 mm



Highest position of table top

1050 mm



Back plate upward

85°



Back plate downward

50°



Reverse Trendelenburg

30°



Trendelenburg

30°



Right Lateral Tilt

20°

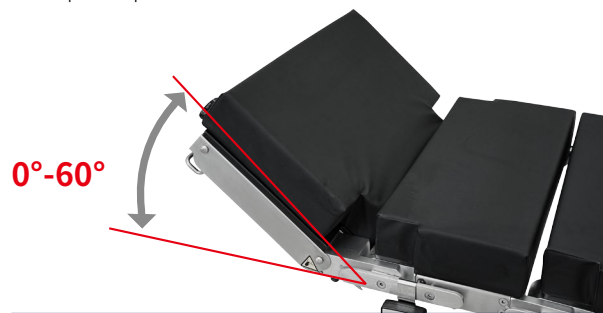


Left Lateral Tilt

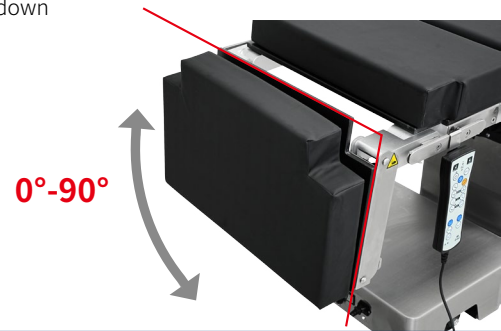
20°



Head plate up



Head plate down



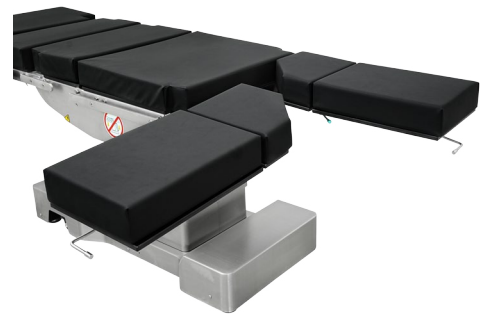
Leg plate up/down

15°/90°



Leg plate outwards

0°-90°



Horizontal sliding

0-300mm



Comprehensive Hospital Design Solutions



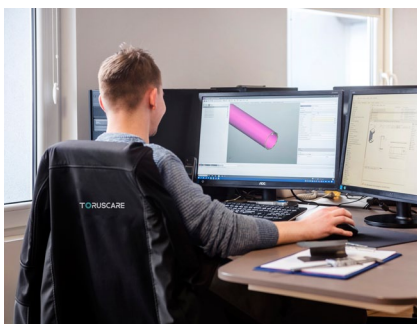
Toruscare has a complete industry chain targeting the global market.



Toruscare provides overall healthcare solutions.



Toruscare provides services for full coverage of target audiences.



Design and Development Excellence

At Toruscare, our strength lies in our robust design and development capabilities. Our dedicated team of engineers and designers continually push the boundaries of innovation, ensuring that our products are at the forefront of medical technology. From conceptualization to prototyping, we meticulously craft each product to meet the highest standards of functionality, durability, and ease of use.



Uncompromising Quality Control

Toruscare is deeply committed to quality, implementing stringent control measures at every manufacturing stage. Our state-of-the-art facilities, equipped with advanced testing and inspection tools, ensure each product meets rigorous standards. This dedication to excellence has earned the trust and loyalty of healthcare providers worldwide.



Global Reach, Local Touch

As a global company, Toruscare understands the diverse needs of different markets. We pride ourselves on our ability to deliver customized solutions that cater to the unique requirements of healthcare providers across the world. Our extensive distribution network and strategic partnerships ensure timely delivery and exceptional after-sales support, making us a trusted partner in the global healthcare community.



Care for All

TORUSCARE

Toruscare Sp. z o.o

Adress: UL. SPACEROWA 1C, 41-253 CZELADŹ, POLAND

Email: export@toruscare.com

Phone: +351 910200400