



Emergency Trolley

## IMPETU EM3

We Provide Customized Overall Solutions  
for Medical Equipment

# PRODUCT SPECIFICATIONS

Specifications	760×475×945mm±10mm
Concave Desig	570×430×12mm±5mm
First Layer	80mm ±5mm
Inner Dimensions	420×370×70±5mm
Second Layer	120mm ±5mm
Inner Dimensions	420×370×110±5mm

Concealed Telescoping Auxiliary Workbench
Document Storage Box
Hidden Retractable Infusion Stand
Rotating 3L Circular Sharps Container
Abs Double Waste Bins
Defibrillator Plate
Hidden Retractable Oxygen Cylinder Bracket
Movable 2.5M Power Cord
Lower Section Features Double Doors

## QUALITY CONTROL

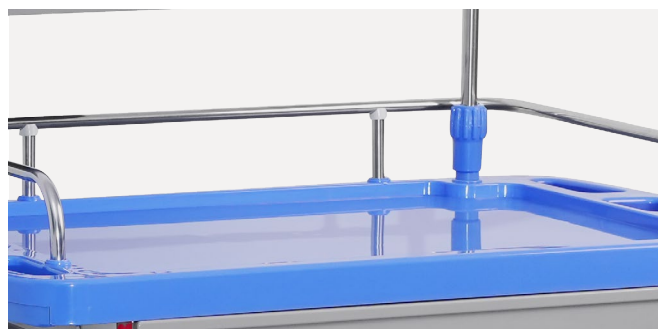
### Material

Primarily made of steel and ABS engineering plastic, it comes with a plastic - steel four - column load - bearing structure.



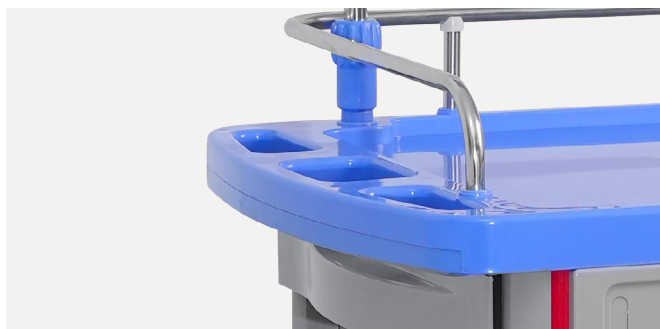
### Table top

Stainless steel fence with soft glass surface prevents items from sliding or falling during cart movement.



### Push handle

Push handles are installed on both sides of the cart, enabling convenient operation by medical staff.



### Left side

Left side: Concealed telescoping auxiliary workbench and document storage box.



## Right side

Right side: Hidden retractable infusion stand, Rotating 3L circular sharps container, ABS double waste bins.



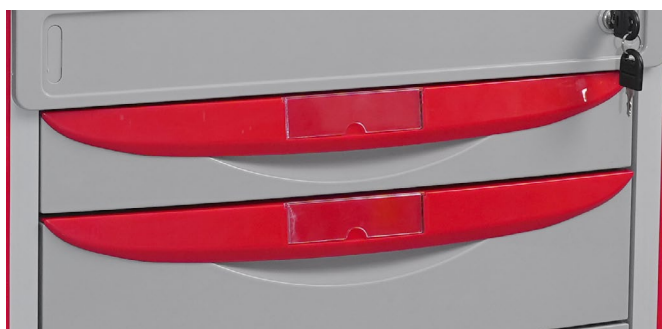
## Back

Rear panel: Defibrillator plate, Hidden retractable oxygen cylinder bracket, Movable 2.5m power cord.



## Drawer label card

Red dovetail-style drawer handles with sealed slot labels to prevent liquid/dust ingress.



## Castor

4-inch high-grade medical silent universal casters, offering smooth and lightweight operation, effortless maneuverability, durability, and two with brakes for easy braking in any position.



## Front

Front of the vehicle body: Central control lock with two-layer drawers. First layer (small drawer front): 80mm  $\pm$  5mm, inner dimensions: 420  $\times$  370  $\times$  70  $\pm$  5mm. Second layer (medium drawer front): 120mm  $\pm$  5mm, inner dimensions: 420  $\times$  370  $\times$  110  $\pm$  5mm. The drawers feature 3  $\times$  3 divider panels for customizable compartmentalization. The lower section features double doors with a cabinet-style structure, ideal for storing bulkier items. The drawers feature 3  $\times$  3 divider panels for customizable compartmentalization. The lower section features double doors with a cabinet-style structure, ideal for storing bulkier items.



# Comprehensive Hospital Design Solutions



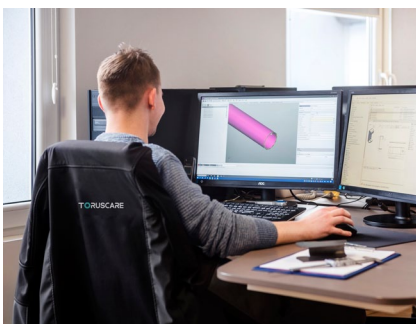
Toruscare has a complete industry chain targeting the global market.



Toruscare provides overall healthcare solutions.



Toruscare provides services for full coverage of target audiences.



## Design and Development Excellence

At Toruscare, our strength lies in our robust design and development capabilities. Our dedicated team of engineers and designers continually push the boundaries of innovation, ensuring that our products are at the forefront of medical technology. From conceptualization to prototyping, we meticulously craft each product to meet the highest standards of functionality, durability, and ease of use.



## Uncompromising Quality Control

Toruscare is deeply committed to quality, implementing stringent control measures at every manufacturing stage. Our state-of-the-art facilities, equipped with advanced testing and inspection tools, ensure each product meets rigorous standards. This dedication to excellence has earned the trust and loyalty of healthcare providers worldwide.



## Global Reach, Local Touch

As a global company, Toruscare understands the diverse needs of different markets. We pride ourselves on our ability to deliver customized solutions that cater to the unique requirements of healthcare providers across the world. Our extensive distribution network and strategic partnerships ensure timely delivery and exceptional after-sales support, making us a trusted partner in the global healthcare community.





Care for All

**TORUSCARE**

Toruscare Sp. z o.o

Adress: UL. SPACEROWA 1C, 41-253 CZELADŹ, POLAND

Email: [export@toruscare.com](mailto:export@toruscare.com)

Phone: +351 910200400